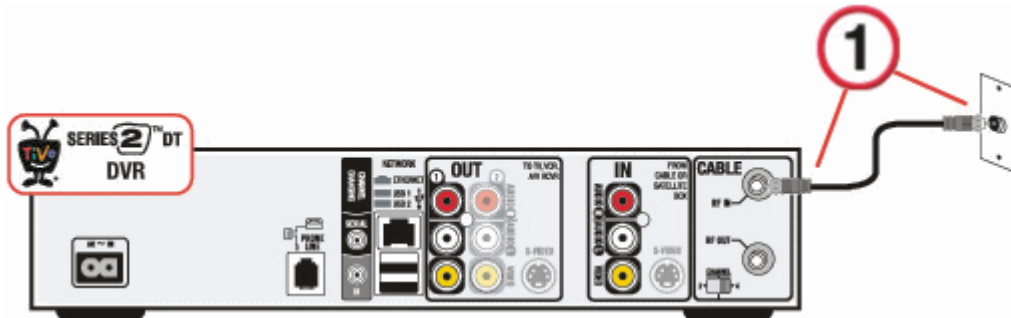


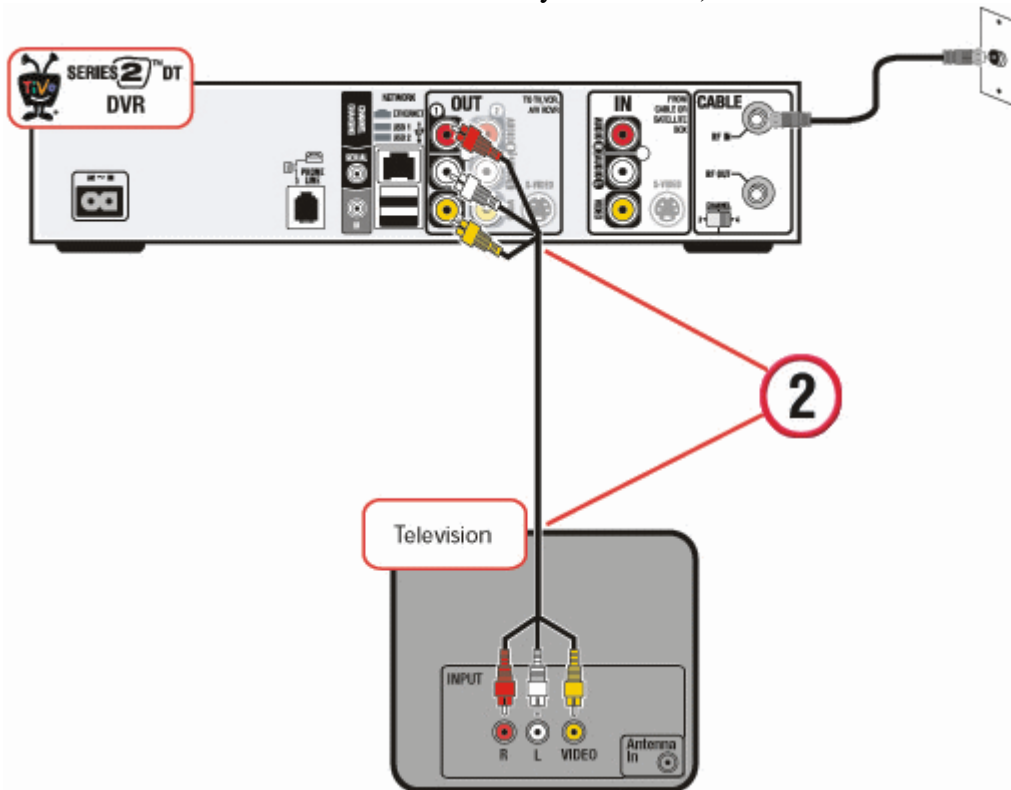
# Ygnition

## TiVo Install/Set-Up

Connect the RF coaxial cable coming from the wall to the **RF In** jack on the back of the DVR.



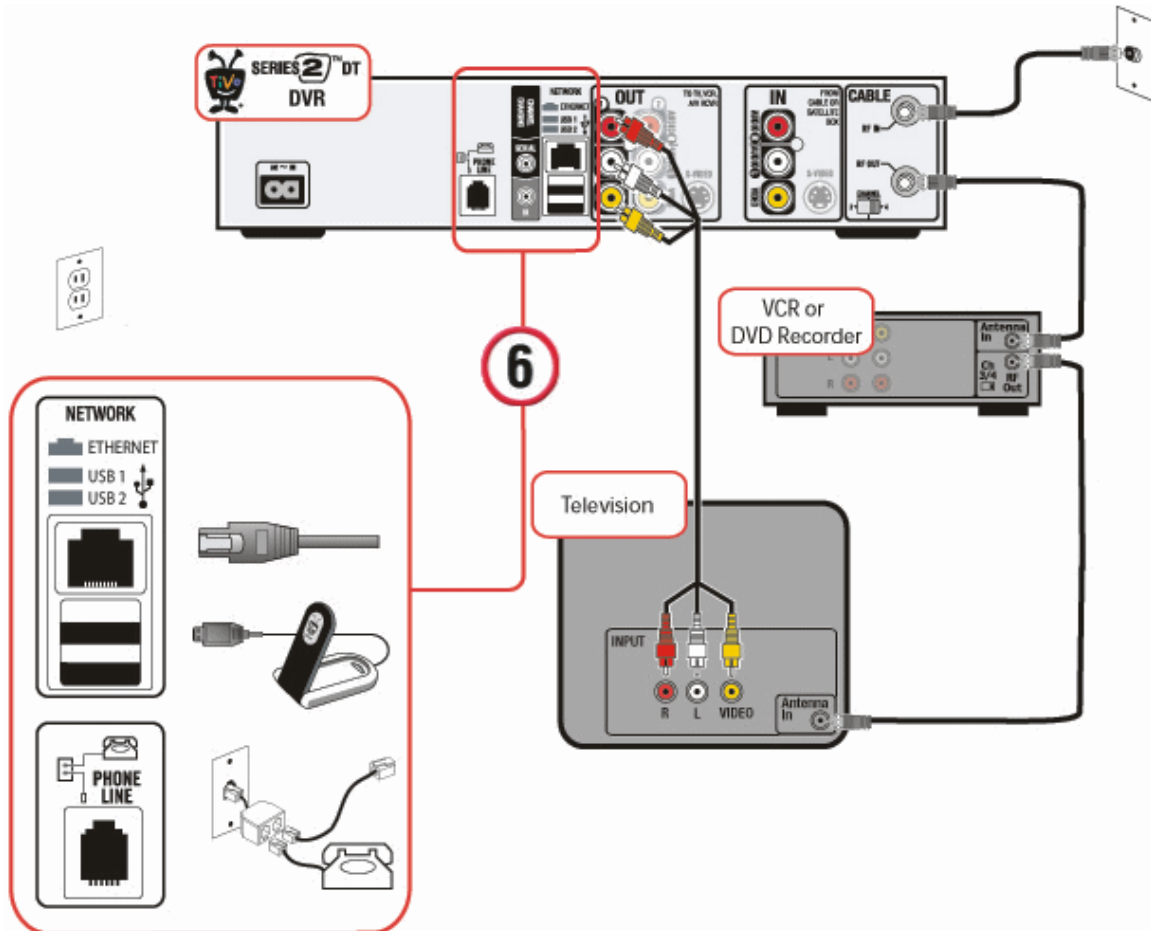
Connect a composite cable (red, white, and yellow connectors) from the **Audio Video Output** jacks on the back of the DVR (you can use either set of output jacks, but we recommend set 1) to the composite input jacks on your TV. (Or connect to the TV using a coax via the RF out on the TiVo to cable in on your TV set.)



# Ygnition

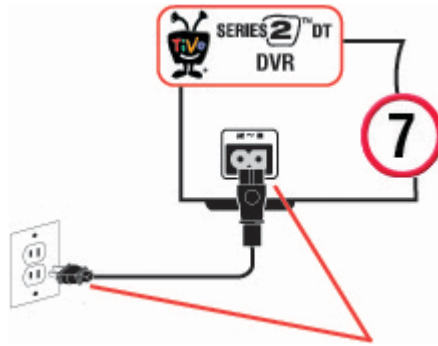
Set up either a network connection (recommended) or phone connection from the DVR to the TiVo Service using one of the following methods.

- **Wired Network Connection:** The Series2 DT has a built in Ethernet port. Connect one end of the Ethernet cable (sold separately) to the Ethernet connector on the back of the DVR, and connect the other end to a port on the router or modem.
- **Wireless Network Connection:** Connect a wireless USB network adapter (sold separately) to one of the USB ports on the DVR.
- **Phone Connection:** Connect the provided phone cord from the DVR to a wall jack.



# Ygnition

Connect the power cord from a wall outlet to the back of the DVR



Turn on your TV and tune it to channel 3 or 4 (depending on the switch setting on the back of the DVR). If you see the "Welcome to TiVo" screen, you are ready to begin Guided Setup. Follow the instructions on the screen to complete the setup of your DVR.